

For Quality Control "FIXO" Folowing These Standards

Dimensions	IS	DIN	BS	ISO	ASTM
	12427	7990	4190	4014	325A
	6639	6914	3692	4016	325M
	1363-I,II	931	-	4017	490A
	1364-I,II	933	-	4018	490M
	1367	EN 24014	-	-	-
	-	EN 24016	-	-	-
Nuts	1363-III	934	4190	4032	563
	14394	555	3692	4034	194
		EN 24032	6916	7413	-
		EN 24034	-	-	-
Sppring Washer	3063	127-B	4464	-	-
Plain Washers & Pack Wshers	2016	125	4320	7089	F436-A
	5369	126	-	-	F436-M
	6610	-	-	-	-
For Mechanical					
Bolts	1367-III	EN 898-I	4190	898-I	-
		267-III			-
Nuts	1367-VI	EN 898-II	4190	898-II	-
		267-IV			
Galvanizing & Plating	1367-XIII	267-10	729	1461	153A
	2629	-	-	10683	153M
	2633	-	-	-	-
	4759	-	-	-	-
	1573	-	-	-	-

Fixo Manufacturing And Standards Range

Sr. No.	ITEM	IS	DIN	ISO	ASTM	BS	AS
(1)	Hex Bolt	1363-I	601	4016	-	4190	1111
		1364-I	931	4014	-	3692	-
(2)	HEX SCREW	1363-II	933	4018		4190	1111
		1364-II		4017			3692
(3)	HEX NUT	1363-III	24034	4034		4190	1112
		1364-III	24032	4032			3692
(4)	COACH BOLT TRANSMISSION	2609	603	-		4933	1390
(5)	HEX BOLT	12427	7990		A-394	4190	1559
		6639					
(6)	SPRING WASHER	3063	127 B	-	-	4464	-
(7)	PLAIN WASHER	2016	125	7089	-	4320	-
			126	7091			
(8)	PACK WASHER	6610	7989				
(9)	HIGH STRENGTH STRUCTURAL BOLT (HEAVY SERIES)	3757	6914	7411	A-325M	4395	1252
				7412			
(10)	HIGH STRENGTH STRUCTURAL NUT (HEAVY SERIES)	6623	6915	7414	A-563M	4395	1252
(11)	HEAVY WASHER	6649	6916	7415	F-436M	-	1252
(12)	MECHNICAL PROPERTIES OF BOLT & NUTS	1367	20898	898	-	20898	-
(13)	HOT DIP GALVANISING	1367	267	1461	A-153M	729	-

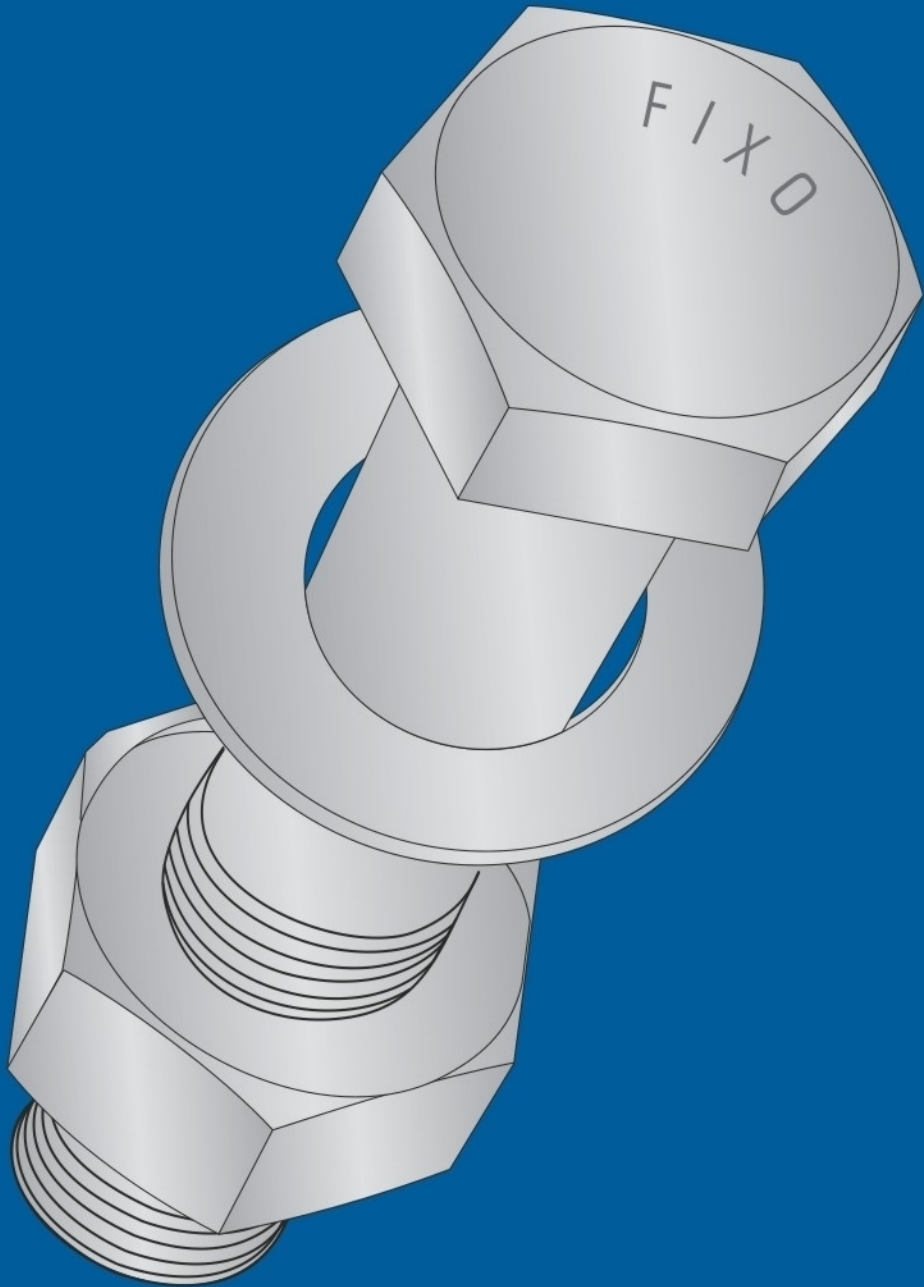


Roshanimpex Pvt. Ltd.

Plot No. 31, Oswal Agro Complex, G.T. Road, Ludhiana-141003 (Punjab) INDIA
Phone: +91-161-6544634, 2530634, Fax : +91-161-2543410
E-mail: sales@roshanimpex.in, Web: www.roshanimpex.in



Let's Make Fasteners Best !



Roshanimpex Pvt. Ltd.

AN ISO 9001: 2000 CERTIFIED COMPANY

The company

The company founded by S. Manjit Singh Khurana in 1967 as a manufacturer of precision fasteners. Now under the leadership of S. Narinder Singh Khurana the company has earned a unique position in the industrial components business. Now we also offer "FIXO" Galvanized fasteners Hex head Bolts, Nuts and step Bolts Grade 3.6, 4.6, 4.8, 5.8, 5.6, 6.6, 6.8, 8.8 and 10.9 as per IS, DIN, BS, AS, ASTM, JIS, and spring washers, conical washers, Toothed Lock washers, and circlips Grade EN-42 (Spring steel) as per relevant IS, DIN, BS & ASTM or customers Drawing & customer specification.

"FIXO" Fasteners are widely used for the erection work of electricity Transmission Towers, Power substations, various kind of tower structures, Electrical equipment fitting switchgears, Transformers, Earthmover equipments, Telecommunication towers, Microwaves towers, Wind energy mills & towers, Critical loaded bridges. Hydro electrical Projects, Sugar industries, Cement Industries, Railway electrification, Textiles/woven and general machinery.

"FIXO" Hex Bolts & nuts are made out of best quality mild steel (SAE 1010, 2062, C20, 1020) for Hex head Bolts & Nuts according to relevant & customer specification specially for Hot-Dip galvanized up to 100 micron coating with dichromate process to avoid white rust.

"FIXO" Hex Bolts & nuts are made out of best quality Hi-tensile steel (EN-8, EN-8D, EN-15,18,19) for Hex head Bolts & Nuts according to relevant & customer specification specially Hot-Dip galvanized up to 80-100 micron coating with D-Hydrogen-Embrittlement process.

"FIXO" Spring washer are made out of best quality spring steel (EN-42) according to IS: 4072 and specially electro galvanized up to 50 microns zinc coating with D-Hydrogen-Embrittlement process.

"FIXO" Fasteners are produced on fully automatic and semi automatic machines with the close & wide tolerance under the perfect and systematic quality control supervision by highly qualified & experienced engineers carefully. Every product undergoes the strictest inspection at every step as per our manufacturing quality assurance plan, then moved to the next operation.

Quality Assurance :

Raw Material to finished products are tested properly in Physical and chemical Laboratory. Our Products in process are inspected at every stage, certified, then moved to the next operation waiting. Every product under goes the strictest inspection because, we know our customers are quality conscious. The inspection and quality control department remain in the picture right from the raw material to shipment.

Laboratory Facilities : We have our own testing laboratory, which is fully equipped with all the facilities for different types of chemical and mechanical tests. We conduct tests on our products regularly during the different stages of manufacturing process. List of testing instruments are available in our factory lab.

Raw Material Testing : We take utmost care in the raw material test, as we purchase the same from very reputed/approved raw material sources in bulk and the same is getting tested as per relevant national & International specifications to ensure the quality of finish product. And we are doing cross checking of checked every lot from NABL Govt. Approved lab to avoid any type of rejection.

Inprocess Inspection : We have quality conscious skilled staff those look after the production process at every stage according to the required parameters and standard specifications right from the raw material, during the whole production process, as per ISO 9001-2000 Instructions.

Physical Testing : We have all modernized testing equipments & special Jig fixtures to check the all tests as per relevant specifications. And we do all tests like Head soundness, Hardness, Tensile test, Wedge test, Proof test, Cantilever, Impact, Twist Test, Permanent Load & Permanent Set test and other tests to ensure consistency, quality and durability.

Segregation : This is treated as most important process. We have the trained as well as experienced man power to ensure only the right product should reach to our buyers as per our quality plans.

Final Inspection : We understand the importance of quality of our product which is to be used in various sensitive projects. So we have obtain a policy to check the finished products as per our SMQP. (Standard Manufacturing Quality Plan) before the delivery, to ensure the quality and also the packing is done as per buyer's specification/Packing list, according to national & International Specification.

Finish : Hot Dip Galvanizing, Electro Galvanizing, Electro plating, Phosphating, Green-Black-Red yellow Zinc Passivation, Auto blackening, Cadmium Plating etc.

OUR SPECIALITIES : ALL THE TREATMENT PLANTS LIKE HEAT-TREATMENT,HOT-DIP GALVANISING, ELECTRO-GALVANISING, ELECTROPLATING ARE INSIDE THE FACTORY. WE ARE HAVING TOOL-ROOM, TESTING LAB FACILITIES AND R & D DEPT. INSIDE THE FACTORY. WE ARE FULLY CAPABLE TO DEVELOP ANY TYPE OF SHEET-METAL COMPONENTS AS PER CUSTOMER'S DRAWINGS & SPECIFICATIONS FROM VARIOUS MATERIALS: HIGH CARBON SPRING-STEEL, STAINLESS-STEEL, PH. BRONZE, COPPER, BRASS, ALLUMINIUM & MILD-STEEL.

M.S. GALVANISED BOLTS



ELECTROPLATED BOLTS



ELECTROPLATED SPL. BOLTS



SHEET METAL COMPONENTS



HIGH TENSILE BOLTS & NUTS



CONICAL DISC WASHERS



WAVE WASHERS



E-CLIPS



TOOTHED LOCK WASHERS



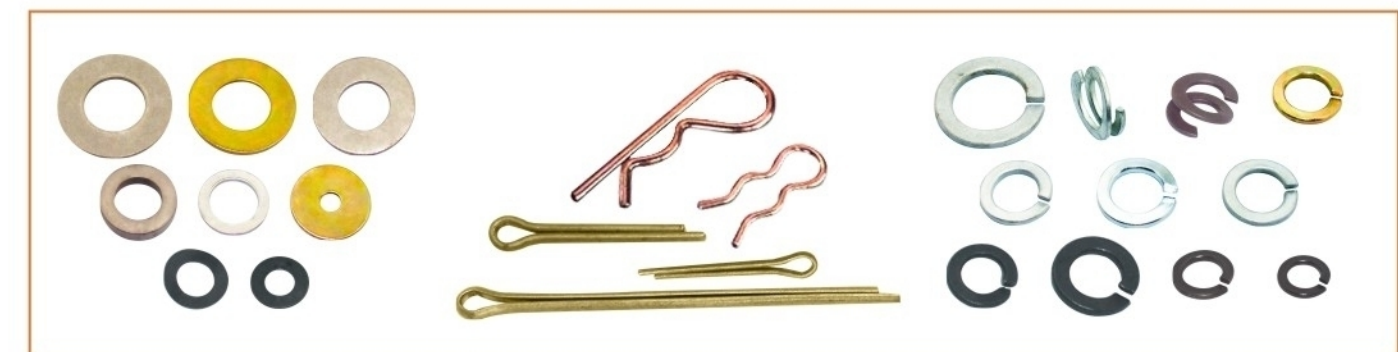
NUTS



HEX NUTS



FLAT WASHERS



SPLIT PINS & R-PINS



SPRING WASHERS

